

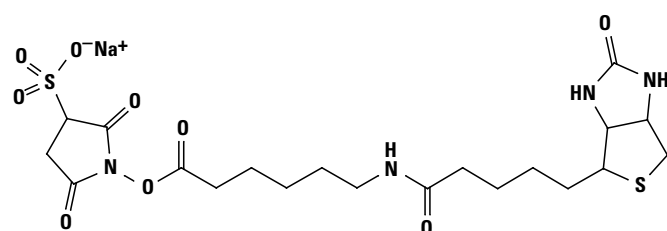
Protein Analysis, Modification and Interaction

Crosslinkers

Sulfo-NHS-LC-Biotin, Thermo Scientific Pierce

Thermo
SCIENTIFIC

NEW PN



Sulfo-NHS-LC-Biotin
M.W. 556.59
Spacer Arm 22.4 Å

Ideal for labelling cell surface proteins and antibodies.

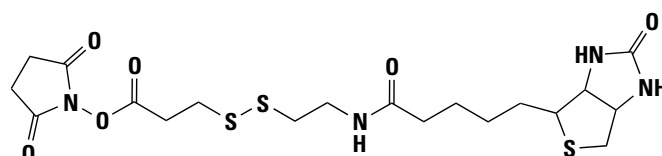
- Water soluble analogue of NHS-LC-Biotin
- Reacts with primary amines at pH7 to pH9 in non-amine-containing buffers such as borate, carbonate or phosphate buffers
- Negative charge of -SO₃ group keeps biotinylation localised at the cell surface
- Creates an amide bond

Catalogue No	Description	Quantity
PN21335	Sulfo-NHS-LC-Biotin	100mg
PN21327	Sulfo-NHS-LC-Biotin, no-weigh format	8 x 2mg

Sulfo-NHS-SS-Biotin, Thermo Scientific Pierce

Thermo
SCIENTIFIC

NEW PN



NHS-SS-Biotin
M.W. 504.65
Spacer Arm 24.3 Å

Disulfide bond in spacer arm is cleavable using reducing agents.

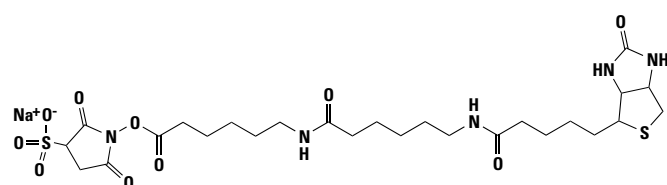
- Cleavable analogue of Sulfo-NHS-LC-Biotin
- Can remove biotin label by cleaving spacer disulfide bond with reducing agents, such as DTT
- Ideal for affinity purification experiments that require efficient elution from immobilised avidin supports (cleaving disulfide bond releases proteins)
- Long spacer arm reduces steric hindrance for binding interactions

Catalogue No	Description	Quantity
PN21331	Sulfo-NHS-SS-Biotin	100mg
PN21328	Sulfo-NHS-SS-Biotin, no weigh format	8 x 1mg

Sulfo-NHS-LC-LC-Biotin, Thermo Scientific Pierce

Thermo
SCIENTIFIC

NEW PN



Sulfo-NHS-LC-LC-Biotin
M.W. 669.75
Spacer Arm 30.5 Å

Long spacer arm reduces steric hindrance when binding several biotinylated molecules to one avidin complex.

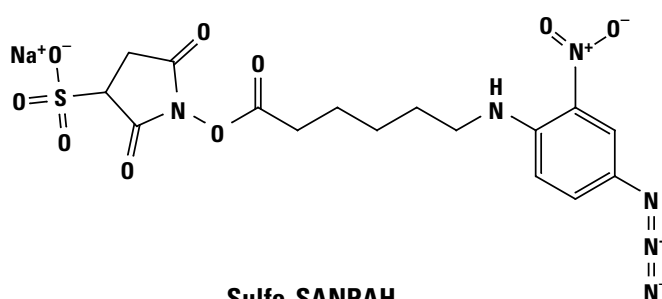
- Forms a stable amide bond with primary amines
- Sulfonated form is water soluble

Catalogue No	Description	Quantity
PN21338	Sulfo-NHS-LC-LC-Biotin	50mg

Sulfo-SANPAH, Thermo Scientific Pierce

Thermo
SCIENTIFIC

NEW PN



Sulfo-SANPAH
M.W. 492.40
Spacer Arm 18.2 Å

Extended chain length, photo-activatable crosslinker.

- Optimal photolysis occurs at 320 to 350nm, which limits damage to biomolecules by irradiation
- Water soluble
- Reactive groups: sulfo-NHS ester and nitrophenyl azide ($A_{max} = 470nm$)
- Reactive toward: amino groups and various sites

Catalogue No	Description	Quantity
PN22589	Sulfo-SANPAH (Sulfosuccinimidyl 6-[4'-azido-2'-nitrophenylamino] hexanoate)	50mg