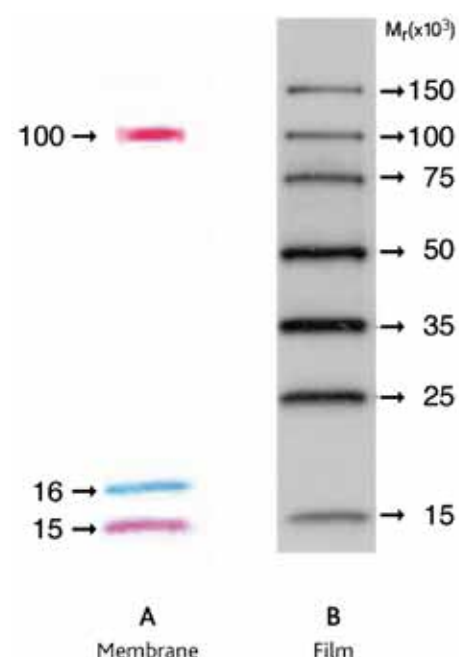


Electrophoresis, Blotting and Immunodetection

Electrophoresis markers - Protein markers

Protein	M _r	Source
Phosphorylase b	97,000	Rabbit muscle
Albumin	66,000	Bovine serum
Ovalbumin	45,000	Chicken egg white
Carbonic anhydrase	31,000	Human erythrocyte
Trypsin inhibitor	20,100	Soybean
Lysozyme	14,400	Chicken egg white



ECL Western blotting molecular weight markers

**NEW**

GH

- Biotinylated marker proteins with defined molecular weights in the range 14,400 to 97,000 enable molecular weight determination in Western blots
- Markers, when incubated with Streptavidin-HRP, are visualised using a luminol-based, light-producing reaction generated with ECL detection reagents
- The protein mix (total concentration 1mg/mL) is supplied in 50% glycerol and requires dilution in SDS-PAGE loading buffer. Storage is at -15°C to -30°C

Catalogue No	Description
GZRPN2107	ECL Western blotting molecular weight markers
GZRPN2280	ECL protein molecular weight markers with Strep-HRP

ECL DualVue Western blotting markers

**NEW**

GE

- Detect proteins on gel and membrane as well as on film
- Prestained markers indicate efficiency of protein transfer to membrane and blot orientation
- Tagged recombinant protein markers allow accurate calculation of molecular weight of target protein(s)
- Product is compatible with any HRP substrate as well as both PVDF and nitrocellulose membrane types
- Contains ECL DualVue Markers (125µL) and S-protein-HRP (50µL)

ECL DualVue Western blotting markers perform two key functions. First, the prestained marker proteins confirm protein transfer in addition to clearly defining blot orientation. Second, the recombinant tagged proteins are detected on film or by CCD imaging in conjunction with the target protein(s) of interest, enabling highly accurate molecular mass determination of the target protein(s). The tagged markers are detected easily and specifically by means of a specific conjugate that eliminates any cross contamination between target protein(s) and markers.

ECL DualVue Western blotting markers contain a mixture of three prestained coloured markers of defined molecular weight (from 15,000 to 100,000) and seven tagged recombinant proteins (molecular weights from 15,000 to 150,000). Each pack contains ECL DualVue markers (125 µL) and S-protein-HRP conjugate (50µL), sufficient for 25 standard gel loadings.

Protein	M _r	Source	Amount (µg), approx.
Pre-stained indicator proteins			
Phosphorylase b	100,000	Rabbit muscle	50
Myoglobin	16,000	Horse muscle	50
Lysozyme		Chicken egg white	50
Recombinant tagged proteins			
Recombinant protein	150,000		1
Recombinant protein	100,000		1
Recombinant protein	75,000		1
Recombinant protein	50,000		1
Recombinant protein	35,000		1
Recombinant protein	25,000		1
Recombinant protein	15,000		1

Catalogue No	Description
GZRPN810	ECL DualVue Western blotting markers (25 loadings)

ECL Plex fluorescent rainbow markers

**NEW**

GH

- Protein molecular weight markers optimised for use with the ECL Plex Western blotting detection system
- Optimised to provide visible marker bands on gels and membranes, as well as fluorescent images using Cy3 and Cy5 channels

Catalogue No	Description	Quantity, uL
GZRPN850E	ECL Plex fluorescent rainbow markers	120
GZRPN851E	ECL Plex fluorescent rainbow markers	500

