



Protein markers, pre-stained, Ez-Run *Rec* ladder



Fisher BioReagents®

Ladder is ideal for monitoring protein separation during SDS-PAGE, verifying Western transfer efficiency, and approximating the molecular weight of blotted proteins.

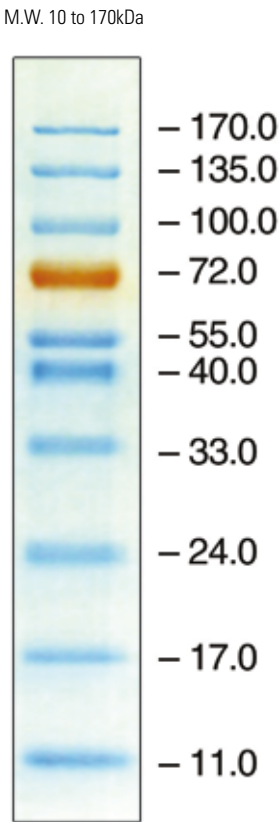


32

Comprises 10 recombinant proteins covalently coupled to a blue chromophore plus a 72kDa reference band tagged with an orange dye<sup>1</sup>. Supplied in gel loading buffer.


Note: The covalently couple chromophore affects protein mobility; this prestained marker should only be used for approximating the molecular weight of separated proteins.

<sup>1</sup> This product is manufactured under the licence for Strep-tag® technology covered by U.S. Patent No. 5,506,121, UK Patent No. 22772698, and French Patent No. 93 13 066.




Catalogue No	Quantity
<b>BPE3603-500</b>	500µL
<b>BPE3603-1</b>	1mL

Protein markers, pre-stained, Ez-Run



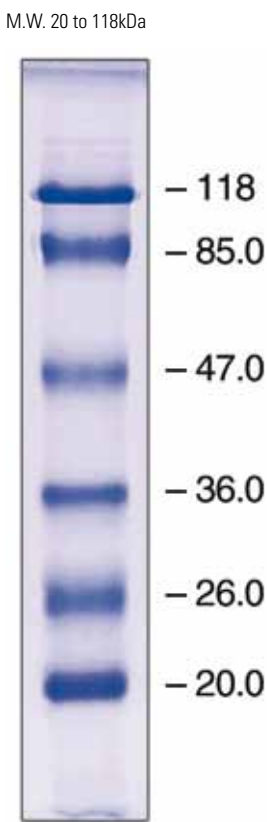
Fisher BioReagents®

Ideal for monitoring protein separation during electrophoresis without staining and for verifying electroblotting of proteins onto membranes.



32

Comprises six purified proteins covalently coupled to a blue chromophore. Supplied in a gel loading buffer and optimised to produce well-defined blue bands after SDS-PAGE. Note: The covalently coupled chromophore affects protein mobility; this prestained marker should only be used for approximating the molecular weight of separated proteins.



Catalogue No	Quantity
<b>BPE3601-500</b>	500µL
<b>BPE3601-1</b>	1mL