

### BCA protein assay, Reducing Agent Compatible (RAC), Thermo Scientific Pierce

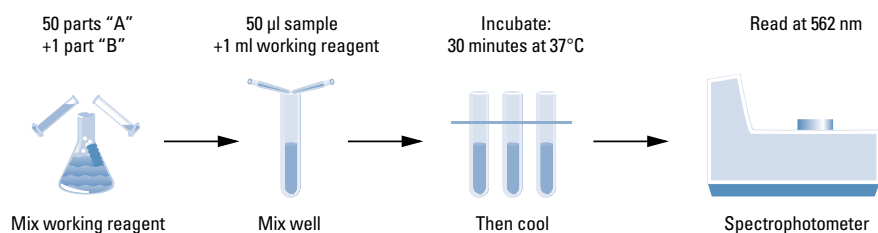
**Thermo**  
SCIENTIFIC

NEW

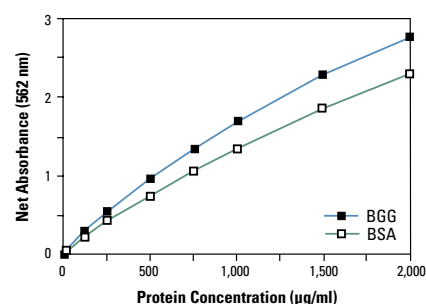
PN

The Thermo Scientific Pierce BCA protein assay is useful for studying protein:protein interactions, measuring column fractions after affinity chromatography, estimating percent recovery of membrane proteins from cell extracts and performing high-throughput screening of fusion proteins.

- Four times faster and easier than the classical Lowry method
- Colorimetric method; read at 562nm
- Compatible with most ionic and nonionic detergents
- All reagents stable at room temperature for 2 years
- Working reagent stable for 24 hours
- Linear working range for BSA from 20 to 2,000µg/mL
- Minimum detection level of 5µg/mL with the enhanced protocol
- Convenient microplate or cuvette format
- Less protein:protein variation than dye-binding methods



Procedure summary for the Thermo Scientific Pierce BCA protein assay.



Colour response curves for the Thermo Scientific Albumin standard (BSA, PN23209) and Bovine Gamma Globulin standard (BGG, PN23212) assayed with the Thermo Scientific Pierce BCA protein assay.

Catalogue No	Description
<b>PN23225</b>	<b>BCA protein assay kit</b> Sufficient reagents to perform 500 standard tube assays or 5,000 microplate assays. Includes: Reagent A, 2 x 500mL Reagent B, 25mL Albumin Standard (2mg/mL), 10 x 1mL ampoules
<b>PN23227</b>	<b>BCA protein assay kit</b> Sufficient reagents to perform 250 standard tube assays or 2,500 microplate assays. Includes: Reagent A, 500mL Reagent B, 25mL Albumin Standard (2mg/mL), 10 x 1mL ampoules
<b>PN23229</b>	<b>BCA Compat-Able protein assay kit</b> Sufficient reagents to perform 250 standard tube assays or 2,500 microplate assays. Includes: Reagent A, 500mL Reagent B, 25mL Albumin standard (2mg/mL), 10 x 1mL ampoules <b>PN23215</b> , Compat-Able protein assay preparation reagent kit
<b>PN23221</b>	<b>BCA protein assay Reagent A, 250mL</b> Bicinchoninic acid and tartrate in an alkaline carbonate buffer
<b>PN23228</b>	<b>BCA protein assay Reagent A, 500mL</b>
<b>PN23223</b>	<b>BCA protein assay Reagent A, 1L</b>
<b>PN23222</b>	<b>BCA protein assay Reagent A, 3.75L</b>
<b>PN23224</b>	<b>BCA protein assay Reagent B, 25mL</b> 4% CuSO <sub>4</sub> •5H <sub>2</sub> O
<b>PN23230</b>	<b>BCA solid, 25g</b> Bicinchoninic acid as recrystallised purified powder sufficient to make 2.5L of Reagent A
<b>PN23209</b>	<b>Albumin standard ampoules, 2mg/mL</b> Contains bovine albumin in 0.9% NaCl solution containing sodium azide
<b>PN23212</b>	<b>Bovine gamma globulin standard ampoules, 2mg/mL</b> Contains bovine gamma globulin fraction II in 0.9% NaCl solution containing sodium azide

For our full range of pipettors and pipettor tips, please see the Fisher Scientific Laboratory Catalogue, or visit our website.

