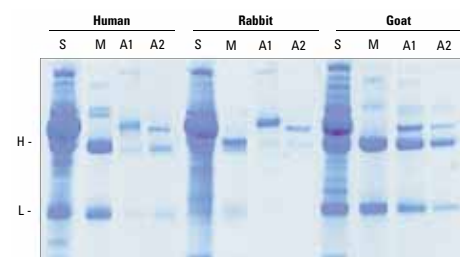
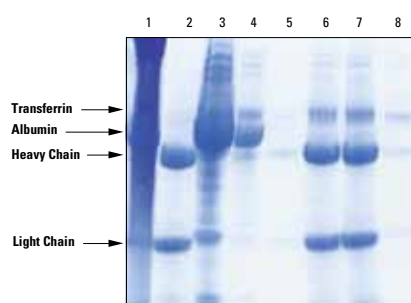


# Protein Purification

## Affinity purification - Antibodies



**Thermo Scientific melon gel efficiently purifies IgG from human, rabbit and goat serum.** Starting serum samples and resulting purification products were electrophoresed by SDS-PAGE and stained with Thermo Scientific GelCode blue stain reagent. S = Serum sample, M = Melon gel-purified product, A1 and A2 = successive elution fractions from Protein A purification. H and L denote antibody heavy and light chain bands in the reducing gel. Similar results were obtained when comparing against Protein G purification.



**Thermo Scientific melon gel offers better recovery and purity from ascites fluid than Protein G.** IgG1 was purified from ascites fluid, resolved by SDS-PAGE and detected with GelCode Blue stain reagent (PN24590). Lane 1. Original ascites fluid. Lane 2. Treated with Ascites conditioning reagent (PN45219) and purified with melon gel. Lane 3. Protein G column flow-through. Lanes 4 to 5. Protein G column washes. Lanes 6 to 8. Protein G column elutions. Note: The Protein G purified sample is contaminated with transferrin (Lanes 6 to 8). The melon gel purified sample is not (Lane 2).

Continuation

### Melon™ gel purification, Thermo Scientific Pierce

**Thermo**  
SCIENTIFIC

NEW

PN

Catalogue No	Description	Quantity
<b>PN45206</b>	<b>Melon Gel IgG spin purification kit</b> Sufficient to purify up to 25mg of IgG from serum. Includes: Melon gel support, 3mL Melon gel purification buffer, 100mL Spin columns and collection tubes	Kit
<b>PN45212</b>	<b>Melon gel IgG spin purification kit</b> Sufficient to purify up to 2g of IgG from serum. Includes: Melon gel support, 5mL Melon gel purification buffer, 100X, dry mix Melon gel regenerant, 1X, dry mix	Kit
<b>PN45214</b>	<b>Melon gel monoclonal IgG purification kit</b> Sufficient to purify IgG from up to 1L of cell culture supernatant or up to 200mL of ascites fluid. Includes: Melon gel support, 200mL Melon gel purification buffer, 100X, dry mix Melon gel regenerant, 5X, dry mix	Kit
<b>PN45216</b>	<b>Saturated ammonium sulfate solution</b> For use with the Melon gel monoclonal IgG purification kit and Melon gel IgG purification kits for sera or as a general purpose salting out agent for protein preparation applications.	1L
<b>PN45219</b>	<b>Ascites conditioning reagent</b> For use with the Melon gel monoclonal IgG purification kit. Use of this reagent is described in the instructions provided with <b>PN45214</b>	5mL
<b>PN89932</b>	<b>Pierce chromatography cartridges, Melon gel</b>	2 x 1mL
<b>PN89933</b>	<b>Pierce chromatography cartridges, Melon gel</b>	1 x 5mL
<b>PN45208</b>	<b>Melon gel spin kit plate</b> 96 well filter plate for IgG screening. Includes: 3 wash/collection plates ( <b>PN89813</b> ) (Balance plate <b>PN45205</b> sold separately)	2 plates
<b>PN44600</b>	<b>Pierce antibody clean up kit</b> Sufficient reagents for up to 10 purifications of 0.5mL IgG samples containing 1% BSA. Includes: Melon gel IgG purification support, 1.2mL Melon gel purification buffer, 100mL Zeba desalt spin columns, 10 x 2mL Spin columns and collection tubes	Kit
<b>PN89972</b>	<b>Melon gel purification buffer</b>	1 pack
<b>PN89973</b>	<b>Melon gel regenerant</b>	1 pack



### Protein L resins and kits, Thermo Scientific Pierce

**Thermo**  
SCIENTIFIC

NEW

PN

Great for purifying ScFv or Fab fragments and monoclonal antibodies containing kappa light chains.

#### Applications for Protein L Affinity resins

- Purify monoclonal and polyclonal antibodies that bind poorly to Protein A or Protein G agarose
- Purify monoclonal antibodies from culture supernatants supplemented with bovine serum
- Protein L immunoprecipitation and co-immunoprecipitation assays
- Purify ScFv and Fab fragments containing kappa light chains

#### Unique immunoglobulin binding specificity

- Binds to kappa light chains on antibodies from a wide range of species without interfering with antigen binding sites
- Binds to all classes of Ig (e.g., IgG, IgM, IgA, IgE and IgD)
- Binds single chain variable fragments (ScFv)
- Does not bind bovine, goat or sheep Igs
- Does not bind to bovine antibodies, making it ideal for purification of mouse IgG from cell culture supplemented with bovine serum

(Note: Lambda light chains and some kappa light chains will not bind. Binding will only occur if the appropriate kappa light chains are present)

- Available in regular and high binding capacity ('Plus') formats
- Offered as resin slurries, chromatography cartridges, and Thermo Scientific NAb spin columns and purification kits