

Climate chambers



Constant climate chambers, HPP



- Heating, cooling and dehumidifying in a single system, using Peltier technology
- 2 x PT100 sensors for mutual monitoring
- Unique long term documentation through integrated ring memory
- Energy saving, up to 90% cost saving compared with compressor technology

The unique combination of Peltier technology and humidity control makes this constant climate chamber outstanding in this field.

Temperature control from 5°C up to 70°C as well as active humidification and dehumidification from 10% to 90%RH are optimally tuned to the requirements for ongoing stability testing in accordance with ICH.

Technical Specification

	10450295	10014347
Volume, L	108	749
Temperature range, °C	5 to 70	5 to 70
Dimensions, external [w x d x h], mm	710 x 640 x 760	1190 x 840 x 1620
Dimensions, internal [w x d x h], mm	560 x 400 x 480	1040 x 600 x 1200
Mass, kg	66	218
Electrical supply	230V, 50/60Hz	230V, 50/60Hz

Catalogue No	Legacy No	Alt. No	Description
10450295	-	HPP 108	108L HPP Chamber
10014347	-	HPP749	749L HPP Chamber

Factory Fitted Options Ordering Procedure

- 1) Specify catalogue number of option(s) required to be factory fitted
- 2) Place your order in the usual manner

The prices given include fitting. Should you have any queries please contact Customer Service.

ATTENTION
FACTORY FITTED OPTIONS MUST BE SPECIFIED AT THE TIME OF ORDERING THE MAIN UNIT

Factory fitted options

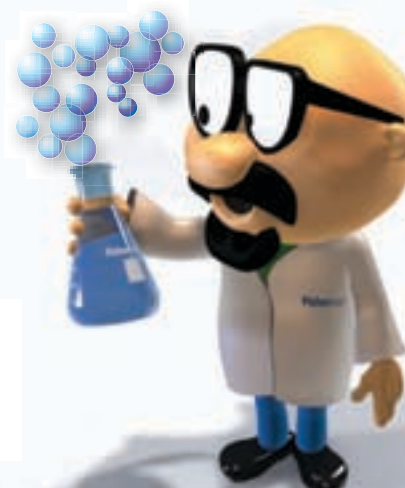
Catalogue No	Legacy No	Description
15147722	-	Light module. Cold white light 5,500 Kelvin, 10 LED light strips arranged on the side walls of the interior, illumination strength (measured from a distance of 10cm) 10,000Lux (180µmol/(m ² s)). Programme-controlled dimming from 0 to 100% in 10% steps, ramp programming in combination with temperature and humidity. For 108L model.
11981209	-	Light module. Cold white light 5,500 Kelvin and warm white light 2,700 Kelvin. 10 LED strips (alternating cold white light strips and 5 warm white light strips) arranged on the side walls of the interior. Illumination strength (measured from a distance of 10cm) 10,000Lux (180µmol/(m ² s)), programme-controlled dimming from 0 to 100% in 10% steps, ramp programming in combination with temperature and humidity. For 108L model.
11757869	-	Perforated stainless steel shelf for HPP749. For 749L model.

Have you thought about.....

Temperature strips, irreversible colour change, Fisherbrand®



Catalogue No	Legacy No	Range, °C	Pack qty
11582503	-	40 to 71	10
11592503	-	77 to 116	10
11502513	-	121 to 160	10
11512513	-	166 to 204	10
11522513	-	210 to 260	10



Look for the Fisherbrand® logo throughout the catalogue. It's your guide to great value products.